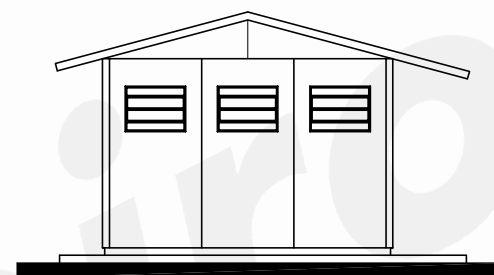
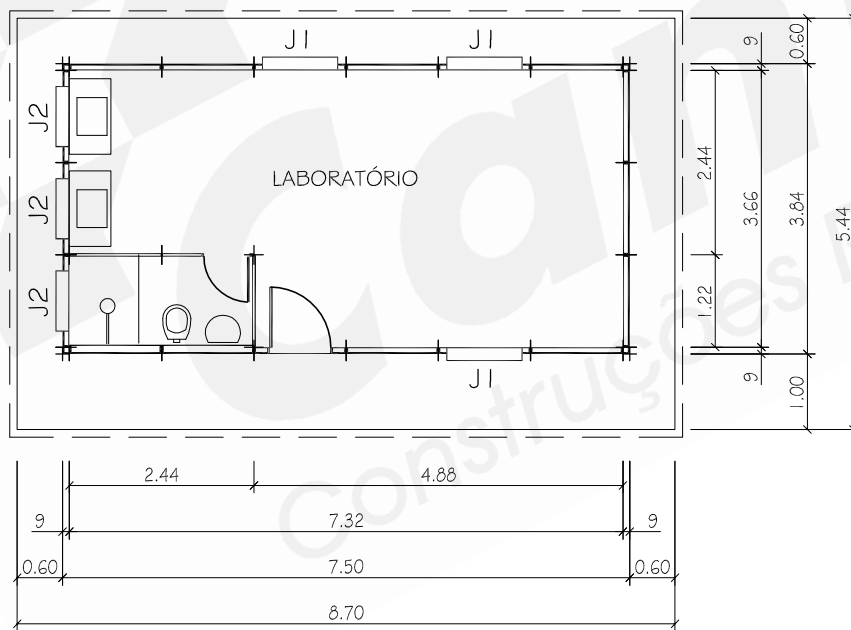


VISTA



VISTA



PLANTA

### OBSERVAÇÕES

PÉ DIREITO: 2,50m  
 COBERT.: FC4mm  
 JANELA J1: 100/100 ALUMÍNIO  
 JANELA J2: 60/80 ALUMÍNIO  
 ESP.TÉC.: ET-SB/SB/SB  
 ÁREA TOTAL = 47,33 m<sup>2</sup>  
 ÁREA ÚTI L = 36,30 m<sup>2</sup>

AO: PP350-ST