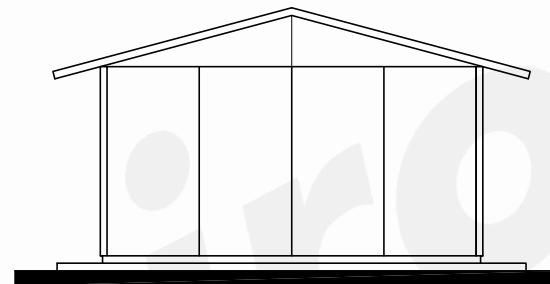
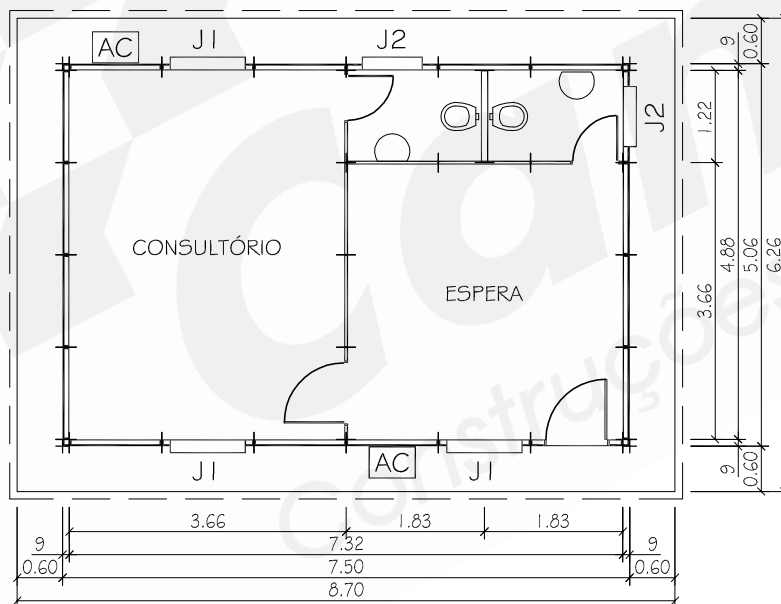




VISTA



VISTA



PLANTA

OBSERVAÇÕES

PÉ DIREITO: 2,50m
 COBERT.: FC4mm
 JANELA J1: 100/100 ALUMÍNIO
 JANELA J2: 60/80 ALUMÍNIO
 ESP.TÉC.: ET- SB/SB/SB
 ÁREA UTIL: 37,95 m²
 ÁREA TOTAL: 54,46 m²

AO: PP150-ST