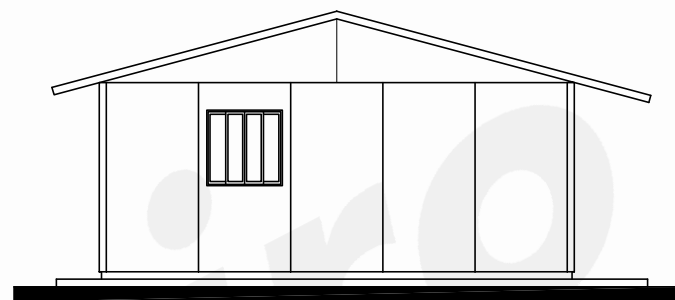
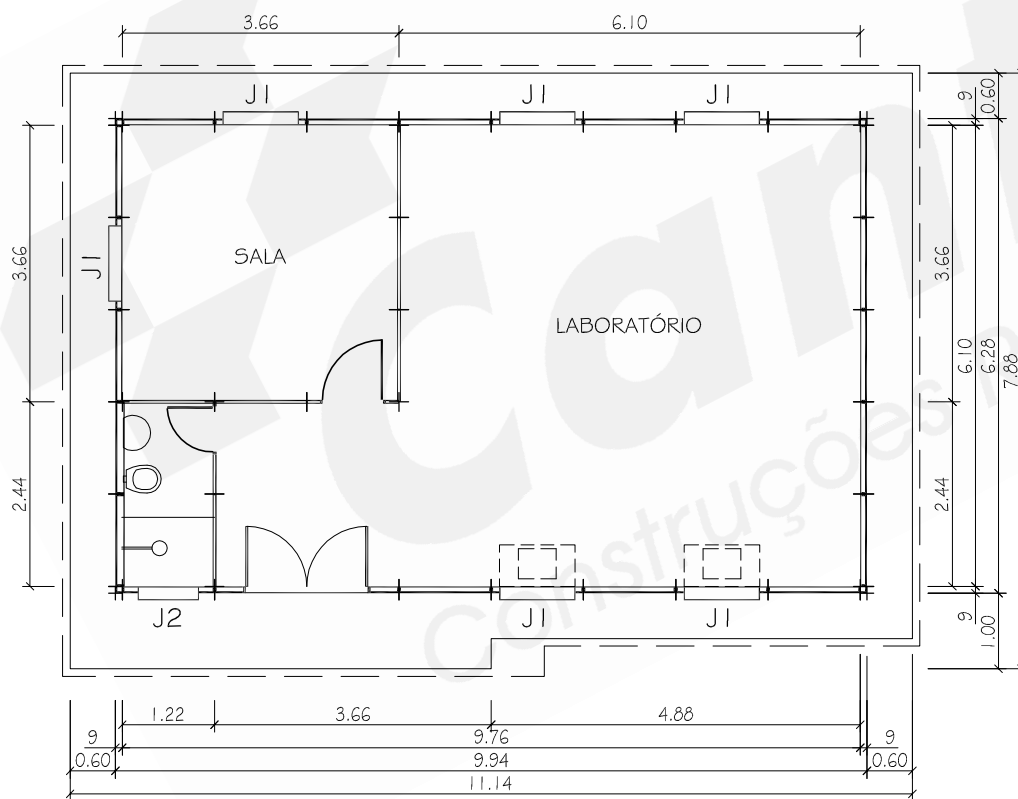




VISTA



VISTA



PLANTA

OBSERVAÇÕES

PÉ DIREITO: 2,50m
 COBERT.: FC4mm
 JANELA J1: 100/100 ALUMÍNIO
 JANELA J2: 60/80 ALUMÍNIO
 ESP.TÉC.: ET-SB/SB/SB
 ÁREA ÚTIL = 67,39 m²
 ÁREA TOTAL = 85,56 m²

AO: PP351-ST